

Solution Note

One Console for Converged Video/Voice/Data Redcell™ Unified Communications Management

Key Features of Redcell

Auto Deep Discovery & Inventory

- All H/W, S/W, physical & logical sub components

Topology

- Hierarchical visual mapping with alarm propagation

Configuration Management

- Real-time, discrete configuration changes
- File, OS and Patch backup, restoration, archiving, deployment and comparison

Change & Compliance Management

- Change detection & policy-based evaluation
- Compliance remediation

Comprehensive Reporting

- Inventory: By Device, Sub-component, Service
- Change/Compliance: Who, What, When, How

Monitoring

- Thresholding on jitter, latency and packet loss
- QoS monitoring for VoIP
- Real-time device health and performance

Security Management

- Multi-level security for individual user and group administration and management

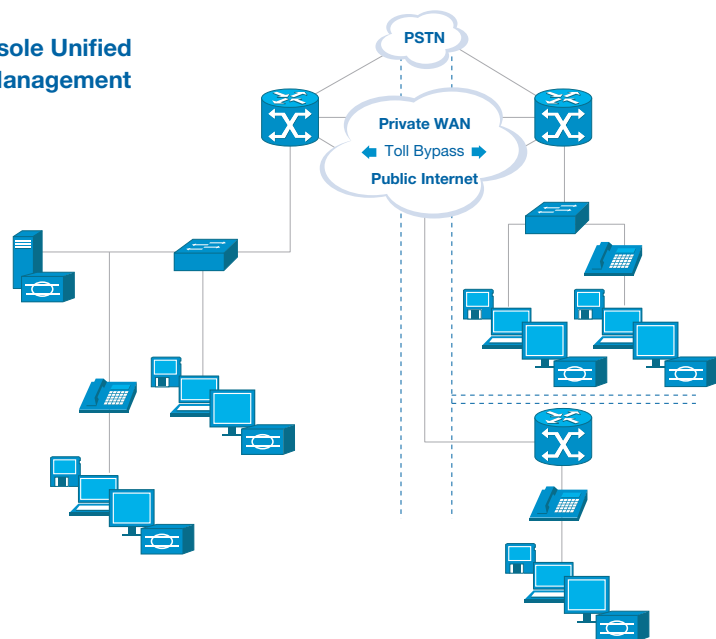
Consolidate and automate IT operations across video, voice, and data infrastructures. All with one GUI.

Redcell is a suite of products for streamlining daily IT management tasks such as deploying, configuring, and maintaining devices and services. This powerful collection of infrastructure management tools provides visibility into what your IT assets are doing—systems, storage, printers, security and network devices—and precise control to direct those resources according to business objectives.

Redcell takes management of IT resources beyond the individual devices to consolidated management through one unified system. The results are: better resource allocation and utilization, increased system productivity, improved leverage of all components' capabilities throughout the enterprise, increased IT performance, rapid deployment or change of devices and services, and automation of IT operations.

Specific benefits in a unified communications solution are uniform monitoring, simplified troubleshooting and reporting, and increased reliability.

Redcell Single Console Unified Communications Management



Redcell's open system platform manages all devices in your Unified Communications solution, and more.

- From a single console, effectively manage all heterogeneous storage devices, switches, PCs, servers, printers, and routers in IT environment
- Improve efficiency by automating tasks across all devices
- Always know the granular inventory of complete IT environment

Solution Note

One Console for Unified Communications Management

Technical Specifications

Consolidated Support for Unified Communications

- Media Gateways
- Media Servers
- End Stations
- Call Control
- Internet/Core/Edge Routers
- Access Routers
- Catalyst
- Wireless
- Firewall
- VPN
- Legacy devices

Operating Environments for Installation

- Windows 2000, XP, 2003
- Solaris 9
- Red Hat Linux

Database

- Embedded MySQL database/ Oracle

Interface Support

- SNMPv1/v2/v3; Proprietary Device CLI, XML, SSH SOAP/ Web services, RMI/IIOP,

Key Product Components

Easy Installation

Consolidates deep management capabilities on a single server install, that accommodates life-cycle management needs for 1000s of devices

Upgrades options for distributed, clustered, or high availability

Agentless Management

Dorado Software's Redcell device driver architecture provides deep insight and control of managed devices

Deep Discovery

Flexibility to discover your environment many different ways including via subnet, IP range, IP address or host name

Change Management

Quickly detect changes to the IT environment through event-driven or proactive change monitoring

Provides comprehensive reporting of configuration changes – meaningful reports on what changed, who made the change, when the change was made and authorization status

Health Management / Troubleshooting

Standards-based health management via WMI/CIM, SNMP, Syslog and IPMI

Topology

Visualize interrelationships of managed systems and underlying infrastructure down to the interconnect level

Customizable topology map for single site or multi-region geographical illustration

Equipment Group Management

Create Static, Dynamic, Nested and Mixed groups for applying one-to-many changes to disparate network devices and group reporting

One-to-many capabilities execute operations or configuration changes against many devices with a single operation, reducing the effort associated with time-consuming and repetitive tasks

Compliance / Configuration Management

Monitor the network configuration to ensure quality unified communications

Reporting

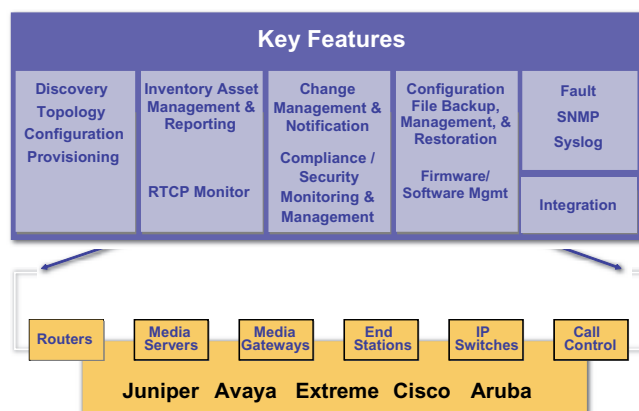
Define, create, populate and post meaningful reports that present the data most appropriate for decision-making

Report templates can be defined, created and stored for on-going report generation with multiple datasets

Reports can be scheduled for future and/or on-going execution in output formats including .html, .pdf, or .csv

Redcell Integrated Service and Network Management Solution

- Simplify Troubleshooting
- Simplify VoIP Reporting
- Increase Reliability



Performance Monitoring

Proactively monitor key system performance metrics to identify bottle necks and performance trouble spots

Remote Access & Control

Direct-access management capability for added control and flexibility