

# Redcell™ OpsCenter

Redcell OpsCenter is the all-in-one management system that network, system, and storage administrators have been looking for to consolidate IT resource management of multi-vendor, multi-technology networked environments. Redcell OpsCenter provides key functions such as automated device, link & service discovery, CMDB inventory, health & performance monitoring, free-form configuration task execution, and comprehensive reporting.

## Key Benefits

### Reduced SW Expenses for Point Management Solutions

- Consolidated management solution reduces need for element managers and associated SW licenses, and reduces staffing and training expenses

### Increased Device Utilization

- Comprehensive visibility of devices, components and their interconnections
- Pre-configured monitor include network services, applications, and performance monitoring

### Fast Problem Resolution

- Single "pane of glass" view into infrastructure allows for quick problem resolution without the use of multiple point tools
- Synchronize connectivity and asset data for a complete picture of your infrastructure, and view in customizable reports and topology

### Increased Operational Efficiency

- Staffing needs and errors are reduced while performing daily tasks such as discovery, group operations, compliance and change management, health monitoring and problem resolution.
- Using CMDB and a common set of configuration primitives in a vendor and device independent manner shortens learning period and reduces chance of errors in day to day operations.

### Ease of Use & Deployment

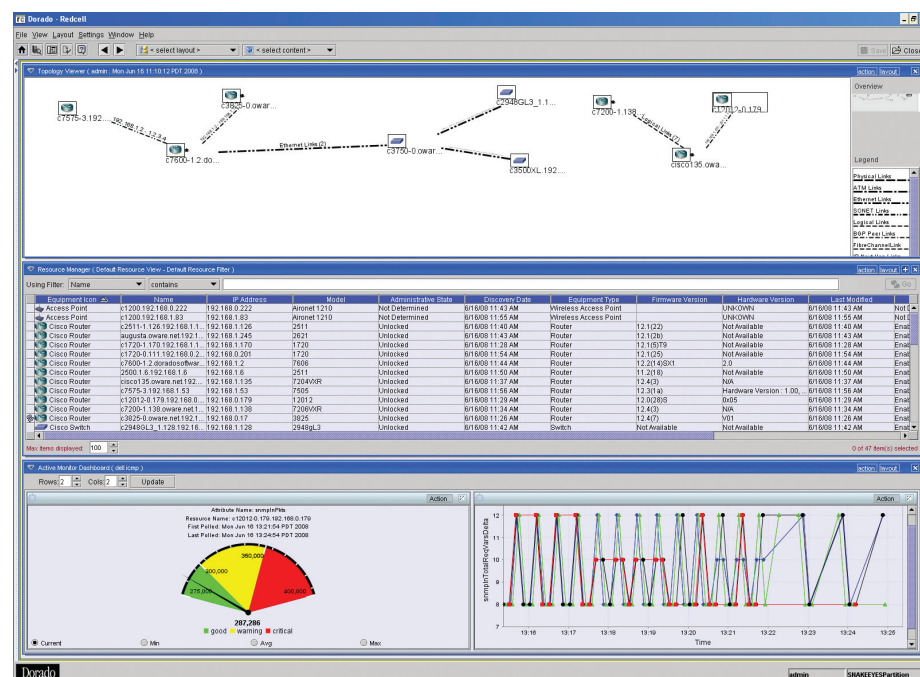
- Easily installed and is ready to use in a matter of minutes.

A key problem facing IT professionals is managing and monitoring their collection of resources with multiple vendor-specific and disparate tools – which keeps IT operational costs high and the ability to automate tasks impossible. To prevent business growth from devolving into IT chaos, administrators need a single, consolidated system they can trust to manage an ever-growing, constantly changing heterogeneous service-delivery environment.

Redcell OpsCenter solves this problem with an inexpensive and easy-to-use solution to automate IT operations. From one console, Redcell OpsCenter automatically finds all networked assets and their subcomponents, understands how they are interconnected and associated, performs heterogeneous device configuration, and proactively monitors the health, availability, and performance of your networked application infrastructure.

Redcell OpsCenter increases efficiency and productivity while reducing administration costs through the automation of key operational tasks and intelligent monitoring of services and devices – in a traditional and virtualized multi-domain environment that includes routers, switches, wireless gear, security appliances, servers, PCs, storage devices and networked printers.

## Redcell OpsCenter at a Glance





## Technical Specifications

### Interface Support

- SNMPv1/v2/v3; Proprietary Device CLI, XML, SSH, WMI/CIM, Web services, RMI/IIOP, HTTP/S

### Complete IT Asset Management

- Routers, switches, security devices, servers, storage devices and networked printers

### Device Support Examples

- Cisco
- Dell
- EMC
- Brocade
- Juniper
- Extreme
- Foundry
- HP
- Windows
- Linux

### Operating Environments for Installation

- Microsoft Windows 2000, XP, 2003
- Sun Solaris 9, 10
- Redhat ES Linux v4, v5
- SUSE Linux v9, v10

### Database

- Embedded database

### Integration

- Web services, email gateway, and event forwarding

## Key Features of Redcell OpsCenter

### Deep Discovery, Inventory, CMDB

- Automated, multi-protocol with centralized credentials management.
- Maintains associations between the managed equipment, so that you know the interdependencies within your IT infrastructure.
- Periodically "resyncs" with the environment to ensure accuracy over time.

### Performance Management

- Built in "Monitors" accurately collect and analyze real-time performance metrics for most device types to inform you of the current and historical performance of your global environment.
- Provides graphical dashboards for device key performance indicators and service performance metrics to consistently ensure you are meeting SLA commitments.
- Advanced alerting when pre-defined or user-defined thresholds are surpassed.
- All performance data and SLA metrics are available for comprehensive reporting.

### Fault & Event Management

- Monitors your environment for potential health-affecting conditions via SNMP & Syslog events.
- Based on pre-defined and user-defined criteria, escalates appropriate issues as alarms to you via multiple notification methods – the Alarm Viewer, via email or page, to 3rd-party systems, etc.
- Automatically trigger system-initiated operations such as script-execution, configuration backups and/or restorations.
- Displays dependable and filterable record of all events and alarms that have occurred in your environment for troubleshooting and remediation purposes.

### Graphical Network Topology Mapping

- Easily view your environment in the customizable topology that displays your network logically and geographically – enabling you to see conditions as and where they occur.
- Drill down in any view with a mouse click to sub-components and logical connections.

### Extensive Reporting

- Create reports using dozens of included templates (asset tracking, device subcomponents, network and device performance, etc.) or easily generate custom reports.
- All reports can be executed immediately or on a schedule and the report output can be saved in .pdf, .html, .xls, .csv, and other standard formats.

### Advanced Scheduling

- Provides an easy-to-use scheduling system to automate task execution in a lights-out environment – you don't have to be near the system.
- Detailed audit records are readily available for each scheduled task execution.